

# All About Bees



## What Is a Bee?

These small, flying insects can be found in most habitats across the world. There are two types of bees called solitary and social. An example of a solitary bee would be a leafcutter bee. They mostly like to live alone. An example of a social bee is the honeybee. They like to live in hives or nests. Bees often come in black and yellow stripes but their black stripes can also be combined with other colours, such as red, blue and green.

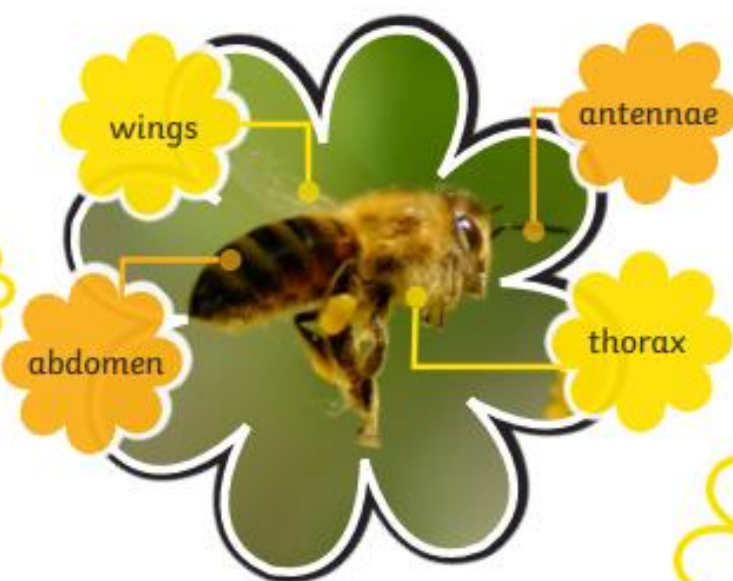
leafcutter  
bee



There are bees living in almost every part of our planet. We need them to make plants and flowers grow.

## The Bee Body

Most bees have an **exoskeleton** and are made up of three key parts called the head, **thorax** and abdomen. The eyes and mouth are on the head. A bee's four wings and six legs are on the thorax. The abdomen holds the digestive system and a honey sac in female honeybees. If the bee is female, it will have a stinger on the end. The buzz of a bee is caused by its four wings moving together. They can move 11,400 times per minute.



## Did You Know...?

Only seven out of the 20,000 species of bees make honey.



## Bees in a Honeybee Hive

There are three kinds of bees that live together in a honeybee hive. They are called a queen, worker bees and drones. A queen is a female bee that can lay eggs. There is usually only one per hive. A worker bee is a female who gathers the nectar from flowers that is then used to make honey. A drone bee is a male bee that helps a queen to lay eggs.

## All About Bees



queen  
bee

worker  
bee

## Why Are Bees Important?

Pollen helps flowers make seeds. Most plants, flowers and crops that grow on Earth make pollen and depend on bees to move it between them. Without the bees moving the pollen, flowers and plants couldn't make seeds.

## Glossary

**exoskeleton:** A hard outer shell that protects some insects from harm.

**thorax:** The middle section of an insect's body.



# Questions

1. How many kinds of bees live together in a honeybee hive? Tick one.

- ☐ one
- ☐ two
- ☐ three
- ☐ four

2. What kind of bee is a leafcutter bee? Tick one.

- ☐ solitary bee
- ☐ social bee
- ☐ queen bee
- ☐ worker bee

3. What do bees carry that helps flowers make seeds? Tick one.

- ☐ nectar
- ☐ pollen
- ☐ petals
- ☐ leaves

4. How many legs does a bee have? Tick one.

- ☐ two
- ☐ four
- ☐ six
- ☐ eight

5. Fill in the missing words.

These small, flying insects can be \_\_\_\_\_ in most \_\_\_\_\_ across the world.

6. Look at the section called **Bees in a Honeybee Hive**.

Find and copy one word that means the same as 'collects'.

---

7. Write down one thing you found interesting about bees.

Explain why you found it interesting.

---

---

---